



*Wolverine*

SKID STEER ATTACHMENT

**PRODUCT MANUAL**

**V2023.9.25**

# **Auger Drive & Bit Manual**

**Model: ADB-13-1218R**



**FOR MORE INFO  
SCAN HERE**



# Content

I. Preface .....	1
II. Security statements .....	2
III. Warning labels .....	3
Position of Warning Label .....	3
IV. Technical Parameters .....	5
V. Installation .....	6
Manually controlled quick-change mechanism ..	6
Hydraulic connection: .....	8
VI. Operation .....	9
Basic operations .....	9
Cautions .....	9
VII. Maintenance .....	10

## **I. Preface**

This product is carefully designed and manufactured to provide you with years of reliable service. Only minimal maintenance ( such as cleaning and lubrication) is required to keep it in top working condition. Be sure to follow all maintenance procedures and safety precautions in this manual, as well as any safety stickers on the product and any equipment on which accessories are mounted.

This manual is designed to help you do a better,safer job. Please read this manual carefully and familiarize yourself with its contents. Do not allow anyone to operate this equipment without reading this manual.

The illustrations and data used in this manual are current at the time of printing (according to information available to us), but we reserve the right to redesign and change attachments as necessary without notice. Prior to operation the primary responsibility for the safety of this equipment falls on the operator. Please ensure that only trained personnel who have read and understood this manual operate the equipment.

If you do not understand this manual or the features, please contact your local authorized dealer or the manufacturer for further assistance. Make this manual available to new owners and new operators for reference.

## II. Security statements

**Improper installation, operation or maintenance of this equipment can result in serious personal injury or even death.**

Before beginning installation, operation or maintenance, operators and maintenance personnel should carefully read this manual and all manuals pertaining to this equipment and the prime mover. Follow all safety instructions in this manual and the prime mover manual.

**Read and understand all safety statements before operating or using this equipment, read all warning labels and safety statements in manuals.** Know and follow all regulations, local laws and other professional guidelines. Know and follow good working practices when assembling, maintaining, servicing, installing, disassembling, or operating this equipment.

**Learn about the performance, size of your device before operation.** Visually inspect the equipment prior to start-up and it is strictly forbidden to operate equipment in a abnormal working condition with all safety devices intact. Check all hardware to ensure tightness. Ensure that all latches, pins and connections are properly installed and secured. Remove and replace any damaged or excessively worn parts. Make sure all safety decals are in place and legible. Keep warning labels clean and replace them when they are worn or difficult to read.

### III. Warning labels

#### Position of Warning Label

The location of the warning labels used is shown in Figure1- 1. Warning labels are identified by their part number and instructions for using the warning labels are shown in 1-2. Use this information to order replacements for lost or damaged warning labels. Be sure to read all warning label before handling attachments. They contain the information you need to understand and the safety and longevity of the product.

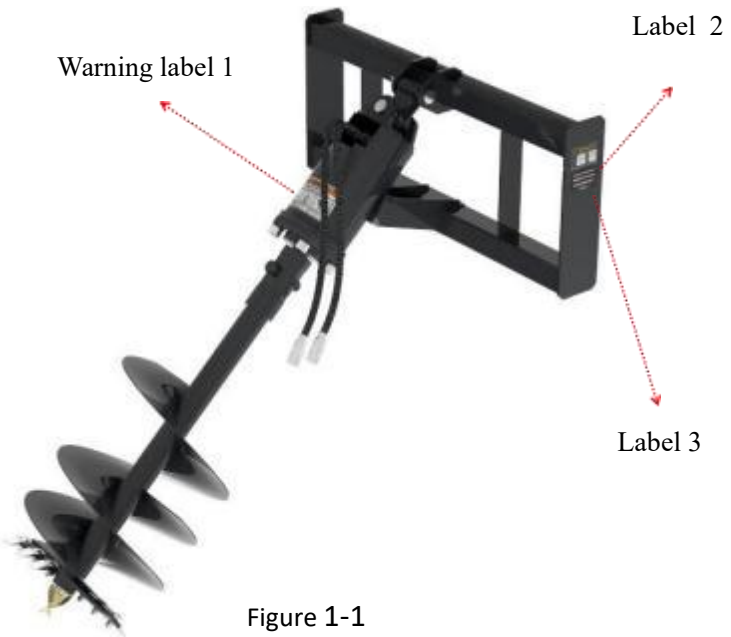


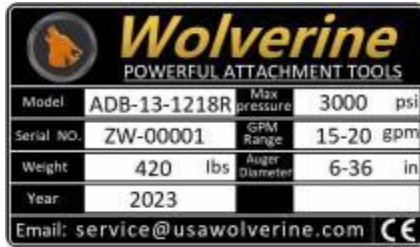
Figure 1-1

**WOLVERINE INDUSTRY**



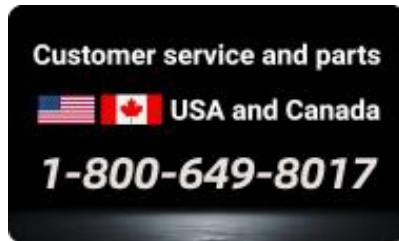
Warning label 1

Specialized for Auger Drive & Bit



Label 2

Nameplate: Auger Drive & Bit

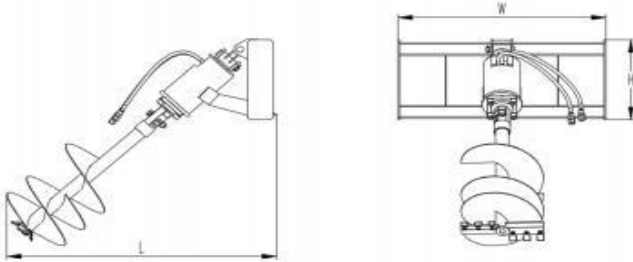


Label 3

After-sales hotline:1-800-649-8017

Figure 1-2

## IV. Technical Parameters



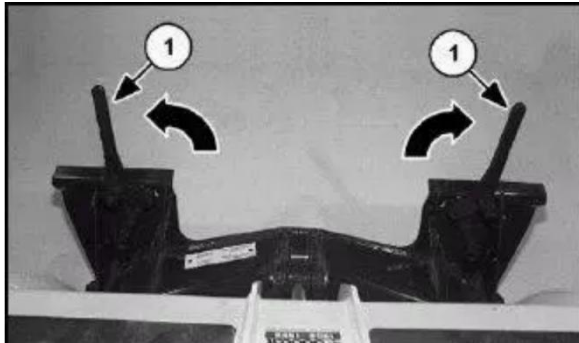
No.	Item	Parameters		Note
	Model	6-36"		
		British Parameters	Metric Parameters	
1	Total Weight	420 lbs	190 Kg	
2	Working Pressure	3000 psi	21 Mpa	
3	Overall Width W	45.3 "	1055 mm	
4	Height H	26.3 "	670 mm	
5	Length L	78.7 "	2000 mm	
6	Effective Working Depth W1	37.4 "	950 mm	
7	Model of Motor		BM3Y-315	Rated flow 75L/min, Speed 240r/min, Power 10Kw
8	Planetary gearbox		3T2A	Maximum output torque 2500N.M
9	Suitable Loader	Skid steer loader		

## V. Installation

Please check the quick-change device and the box broom sweeper before installing the sweeper for use.

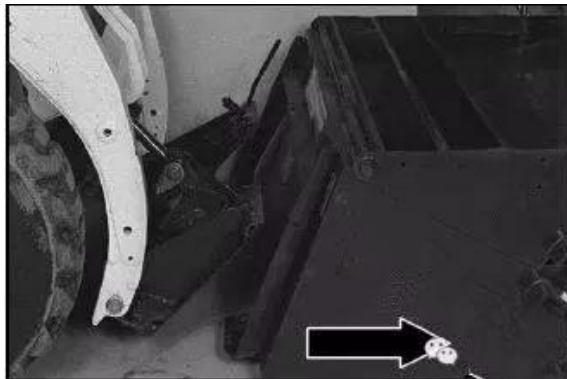
### **Manually controlled quick-change mechanism:**

Pull the lever of quick-change mechanism fully open. (as shown below)



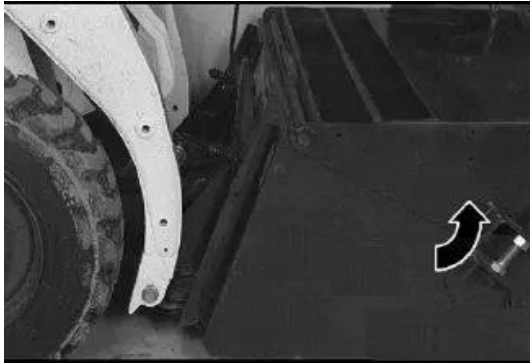
Enter the cab, fasten your seat belt, depress the safety lever and start the engine. Release the hand brake.

Tilt the quick-change device towards the front. Slowly move the machine forward so that the upper edge of the quick-change unit is fully integrated with the mounting flange of the sweeper. (as shown below)

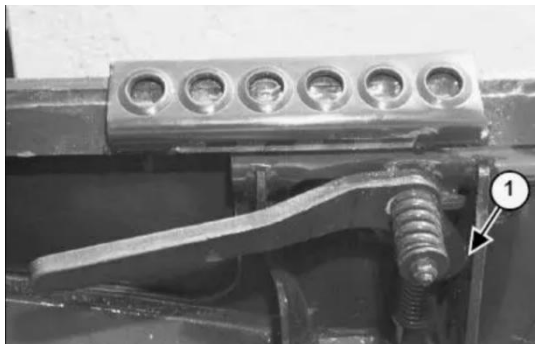


**WOLVERINE INDUSTRY**

Ensure that the lever of quick-change mechanism does not collide with the sweeper. Retract the quick-change unit backwards until the sweeper is completely off the ground. (as shown below)



Turn the engine off and leave the cab. Depress the quick-change lever until the locking pin is fully inserted into the pin hole in the mounting bracket to be locked (Figure below).

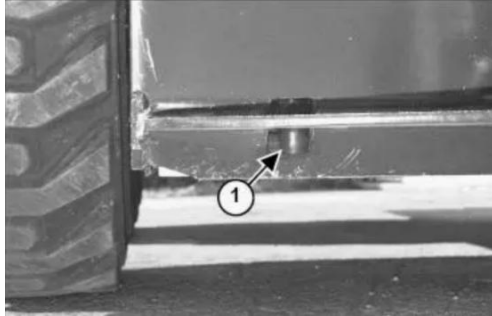


The locking pin of the quick-change device is fully inserted into the pin hole of the cleaner mounting bracket and locked, so that the cleaner is tightly bonded to the quick-change device.(Figure below)

**WOLVERINE INDUSTRY**

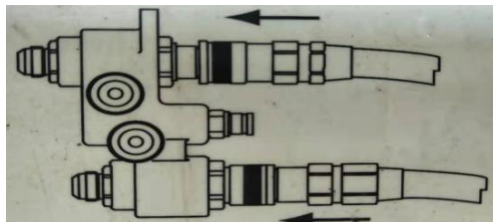
**WARNING:**

The locking pin of the quick-change device must be inserted into the pin hole of the attachment, and the lever must be fully depressed and locked. Failure to do so will cause the sweeper to fall off the loader, resulting in serious injury or even death.



**Hydraulic connection:**

Connect the high pressure hose and oil-return hose of the sweeper to the auxiliary hydraulic plug on the skid steer loader. Push the joint toward the lock position after alignment and insertion. (as shown below).



## **VI. Operation**

### **Basic operations**

1. Select the appropriate drill bit and drilling position, insert the Auger into the drilling position and fix it.
2. Attach the Auger to the skid steer loader and move to a specific location.
3. Start drilling, control the rotate speed and feed speed of the drilling machine so that the Auger remains stable during the drilling process.
4. When the Auger works in a mixed structure of soil and rock, pay attention to prevent excessive force, so as not to cause damage to the drill or overload of the auger drive.
5. When the drill bit needs to be replaced, shut down the auger drive and wait until the auger stops rotating before replacing the drill bit.
6. When drilling work is finished, the auger should be removed from the drilling hole and the bit and drilling hole shall be cleaned.

### **Cautions**

1. Before operation, check whether the auger and the drill rod are normal. If there is any abnormality, handle it in time.
2. In the drilling process, pay attention to keep the feed speed and rotate speed stable to prevent excessive force.
3. After the drilling is completed, care should be taken to clean the auger and the drilling position to ensure the next use.
4. During use, care should be taken to avoid entangling the auger with wires or other items to avoid accidental injury.

## VII. Maintenance

Regular maintenance is key to extending life span of the equipment and safe operation. Maintenance requirements have been reduced to an absolute minimum. However, it is important that these maintenance functions are performed as described below.

No.	Maintenance projects	Daily (Per 8 Hours)	Refer to manual for prime power
1	Regular cleaning of equipment	✓	
2	Check hydraulic lines	✓	
3	Change lubricating oil regularly	✓	
4	Inspection of operation safety	✓	
5	Check that the prime mover hydraulic system has sufficient oil	✓	
6	Check if hardware is missing or loose. Replace or tighten it if necessary	✓	
7	Check if warning decals are missing or damaged and replace them if necessary	✓	
8	Clean the air filter of prime mover		✓

**WOLVERINE INDUSTRY**

**WARNING:** Hydraulic oil/diesel fuel spilled under pressure can penetrate the skin and cause serious injury. Fluid spilling from a very small hole is almost invisible. Use a piece of cardboard or wood, not your hands, to look for suspicious leaks.



***Wolverine***

---

**Tel: 1-800-649-8017**

**Business: [sales@usawolverine.com](mailto:sales@usawolverine.com)**

**AS service: [service@usawolverine.com](mailto:service@usawolverine.com)**

**Website: [www.usawolverine.com](http://www.usawolverine.com)**

**WOLVERINE ATTACHMENT**